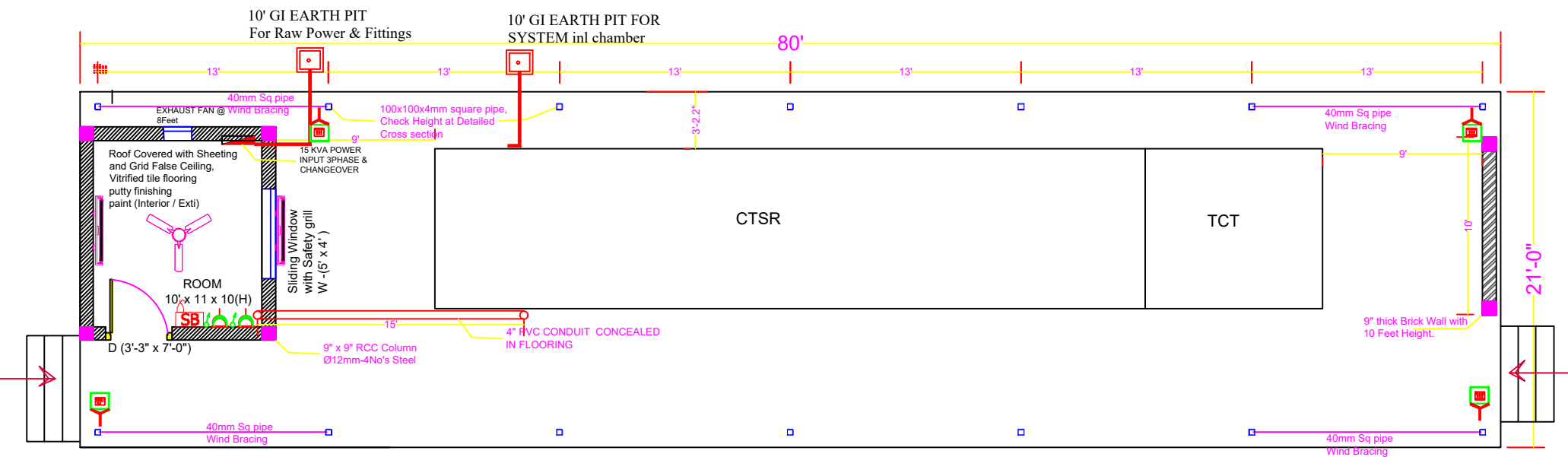
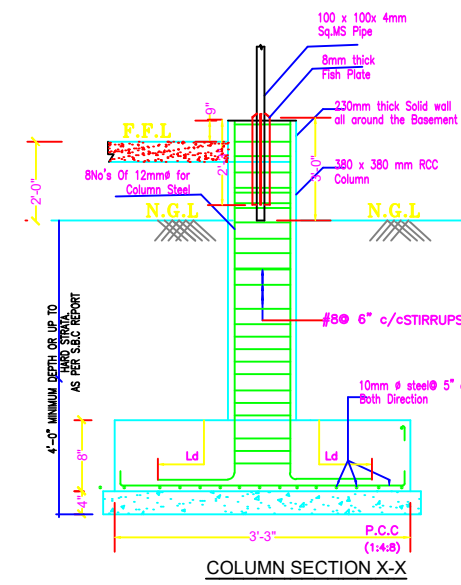


PLINTH BEAM DETAILS AT CONTROL ROOM BENETH THE BRICK WALL & STOP WALL

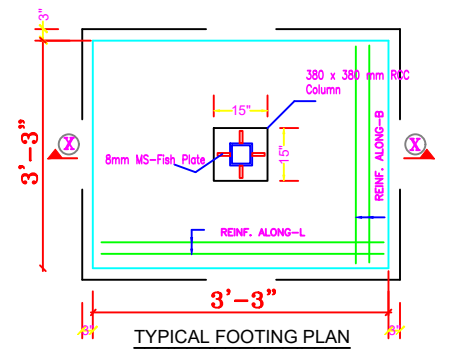
S.No.	TYPE	PLINTH BEAM SIZE	PLINTH BEAM SECTION	REINFORCEMENT DETAILS
1	PB1	9" x 12"		Y12- 2 +2 Nos TIES Y8 @ 8"c/c



PLAN



COLUMN SECTION X-X



TYPICAL FOOTING PLAN

LEGEND:-

SYMBOL	DESCRIPTION	QTY
	1X 6/16A SOCKETS MULTI DOOR CONTROLLED BY 16A SWITCH @ 2' Feet Height	02
	LIGHTING SWITCH BOARD +1500@FLL + Socket	01
	20W LED TUBE LIGHT @9 Feet Height	02
	Ceiling Fan	01
	DISTRIBUTION BOARD(TPN)	01
	copper plate earthing with 10' depth GI pipe and chamber construction rating below 5 ohms.	02
	50W LED BULKET For Exterior Area Lighting Fitted above 15 feet Height.	04
	9W LED Holder Bulbs for Control room	01

ELECTRICAL REQUIREMENT:

- 1) DB -3PHASE - TPIN- Input power 100Amps 4pole MCB and 20amps DP -2no's + 10amps-2No'sDP
- 2) 3- Phase Changeover. ( support 15KVA- DG)
- 2) 2No's Earth Pits of reading should Satisfy under 5 OHM with chambers.
- 3) Tube lights -2 no's.
- 4) 50Watts focus lights 4 no's
- 5) Switch boards as required and 16amps sockets 2 no's
- 6) 4" PVC CONCEALED conduit pipe room to Container as shown in drawing

NOTE : All Dimensions are in Feet and inches

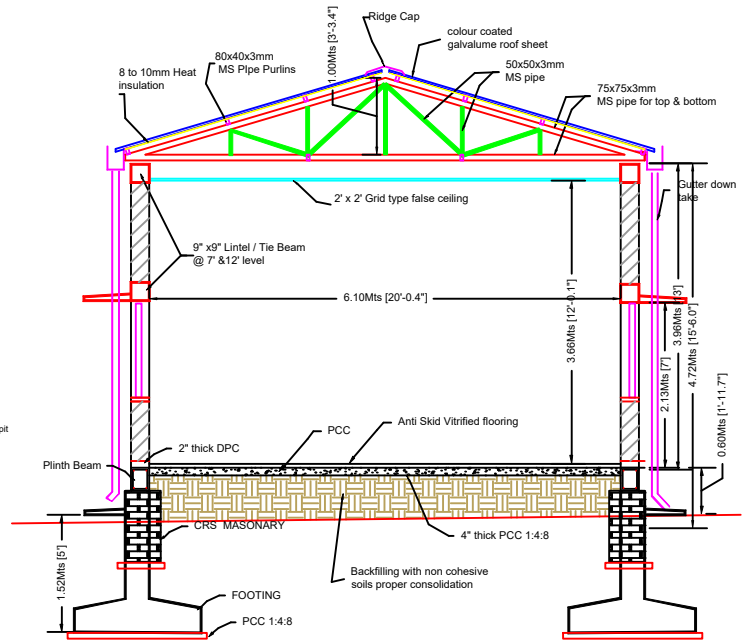
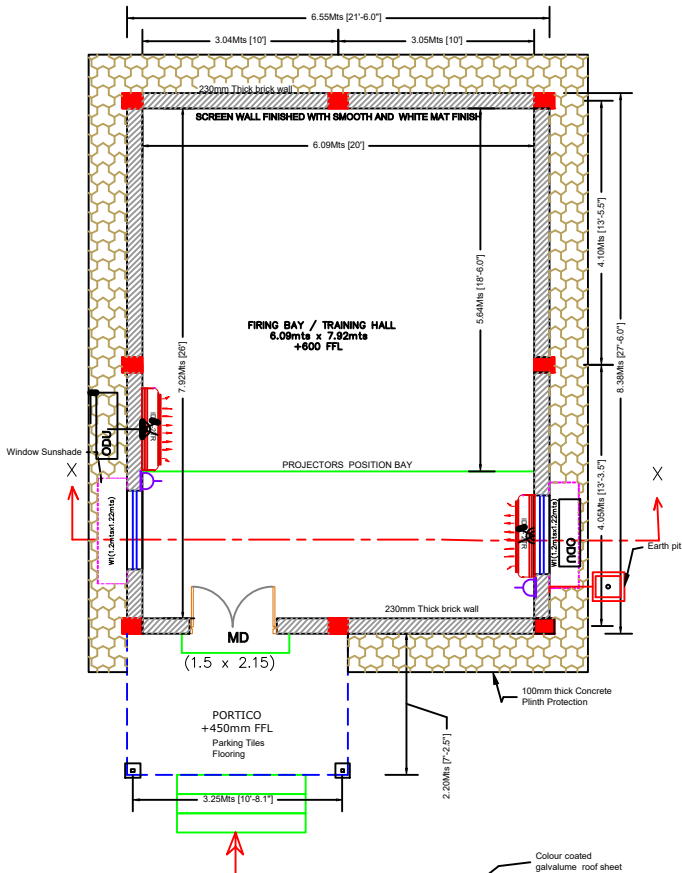
Project Details:

DETAILED SHELTER CONSTRUCTION LAYOUT PLAN FOR CTSR - OUTDOOR UNIT (REVISED SIZE OF 80' x 21')

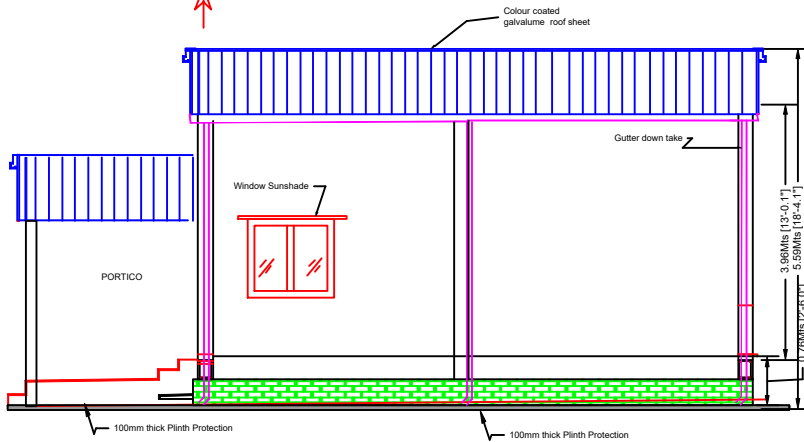


Regd. OFFICE : B-42 , INDUSTRIAL ESTATE SANATH NAGAR,, HYDERABAD-500 018, TELANGANA, INDIA.

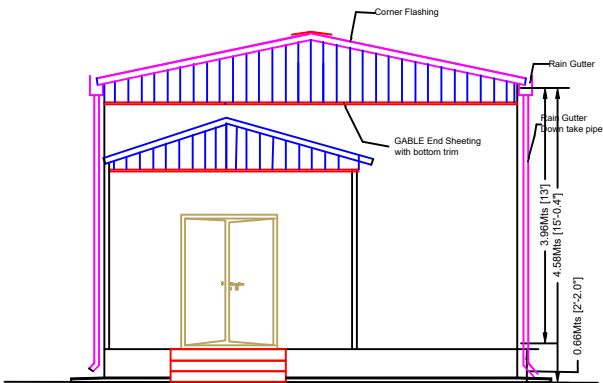
## AWeSIM FLOOR PLAN



CROSS SECTION X-X



LONGITUDINAL ELEVATION



GABLE ENDS & FRONT ELEVATION

### SCOPE OF WORK :

- 1) ALL DOOR FRAMES ARE ANTI TERMITE PROOF HARDWOOD AND GOOD QUALITY FLUSH SHUTTERS /HEAVY DUTY WPC SHUTTERS
- 2) ALL WINDOWS ARE UPVC 3 TRACK SLIDING WITH MOSQUITO SS MESH and SAFETY WINDOW GRILL
- 3) ALL ELECTRICAL WORKS ARE AS PER DRAWING AND IN CHARGE DIRECTIONS.
- 4) ALL INTERNAL WALLS ARE 2COATS PUTTY + 1 COAT PRIMER + 2 COATS PREMIUM EMULSION.
- 5) ALL THE EXTERNAL WALLS ARE 1 COAT OF EXTERNAL PRIMER AND 2 COATS OF EXTERNAL APEX EMULSION.
- 6) 2' x 2' Size 10mm THICK VITRIFIED GOOD QUALITY TILES WITH 3mm SPACER FILLED WITH WATER PROOF GROUT.
- 7) EARTH PIT-01 Value below 5.0 Ohms
- 8) Installation of 2No's of 2TON Split Air conditioners

### GENERAL NOTES :

- ALL DIMENSIONS ARE IN METERS & MM'S AND ARE UNFINISHED DIMENSIONS UNLESS OTHERWISE SPECIFIED.
- DO NOT SCALE DRAWINGS. ONLY WRITTEN DIMENSIONS SHALL BE FOLLOWED, ANY DISCREPANCIES NOTED SHALL BE BROUGHT TO THE NOTICE OF THE ARCHITECT PRIOR TO EXECUTION.

REV-1	03.03.2026	Window shifted, Roof insulation sheet added
REV-0	02.12.2025	
REV-No	Date	Details of Change

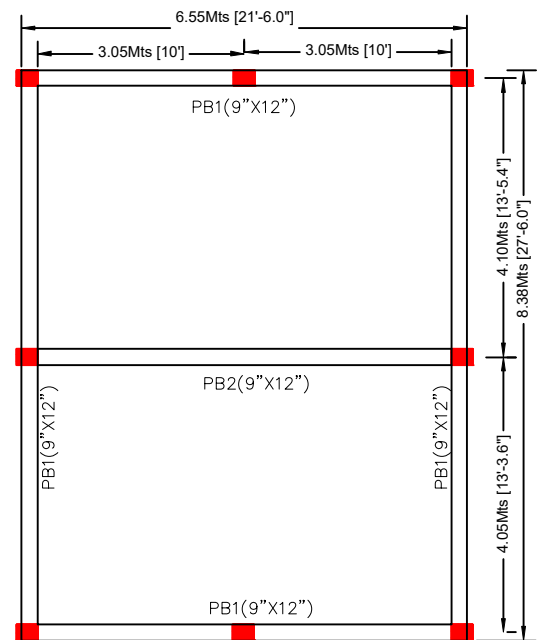
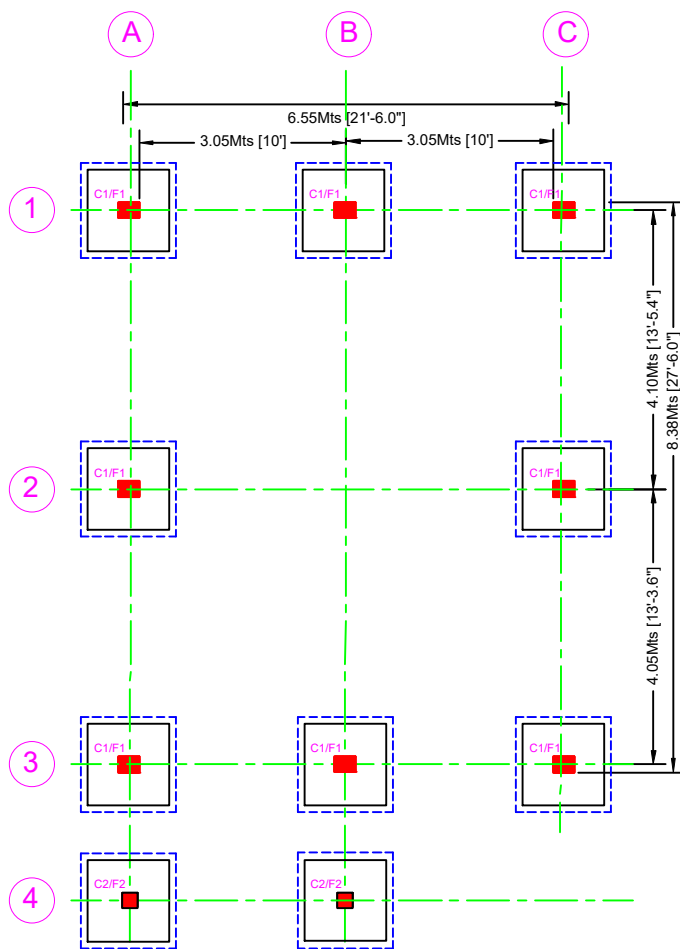
Project Title:

AWeSIM - SHELTER PLAN & DETAILS

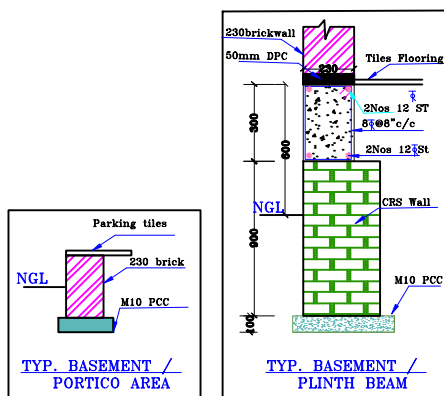
DWG NO:	ZEN-AWeSIM-01
DRAWN	RANGA
DESIGN	RANGA
SCALE	NTS
DATE	02-12-2025



Regd. OFFICE : B-42 , INDUSTRIAL ESTATE  
SANATH NAGAR, HYDERABAD-500 018,  
TELANGANA, INDIA.

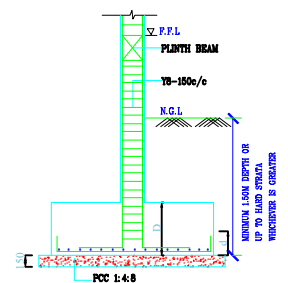
FOOTING SCHEDULE :

FOOTING TYPE	FOOTING SIZE (A x B)	FOOTING DEPTH	PARALLEL TO BREADTH (A)	PARALLEL TO LENGTH (B)	NUMBERS
		(D IN MM)	BOTTOM REINFORCEMENT	BOTTOM REINFORCEMENT	
F1	1200x1500mm	450mm	12 $\phi$ 125mm/c-(BOT)	12 $\phi$ 125mm/c-(BOT)	8
F2	900x900mm	200mm	12 $\phi$ 125mm/c-(BOT)	12 $\phi$ 125mm/c-(BOT)	2



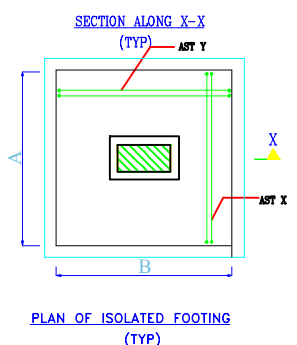
COLUMNS SCHEDULE :

	C1 - (300X380) 8-Numbers	C2 - (230X230) 2-Numbers
<b>COLUMNS DETAILS</b>		
<b>STIRRUPS PROFILE</b>		



## PLINTH BEAM DETAILS

	PBI-(230X300)	PB2-(230X300)
PLINTH DETAILS		
STIRRUPS PROFILE		



TITLE:

## AWeSIM SHELTER STRUCTURAL DETAILS

REV-1	03.03.2026
REV-0	02.12.2025
DWG NO:	AWeSIM_ZEN_STR-002
DRAWN	Ranga Nath
DESIGN	Ranga Nath
SCALE	NTS
DATE	02.12.2025



Regd. OFFICE : B-42 , INDUSTRIAL ESTATE  
SANATH NAGAR,, HYDERABAD-500 018,  
TELANGANA, INDIA.